



# Pupil Enrollment Projections

*Accurate enrollment projection data with actionable recommendations*

Enrollment affects your district's funding and staffing, defines future academic offerings, and influences short- and long-term planning for bond work, renovations, and new construction. A reliable estimate of the future enrollment in your district is essential to making the most informed operational and facility-related decisions. Updating your pupil enrollment projection (PEP) annually helps you have the most accurate data when planning for the future.

## Leading data provider for K-12 school districts

For more than 30 years, our owner's representation and real estate consulting team has provided data and advice to guide districts in their real estate decision-making.



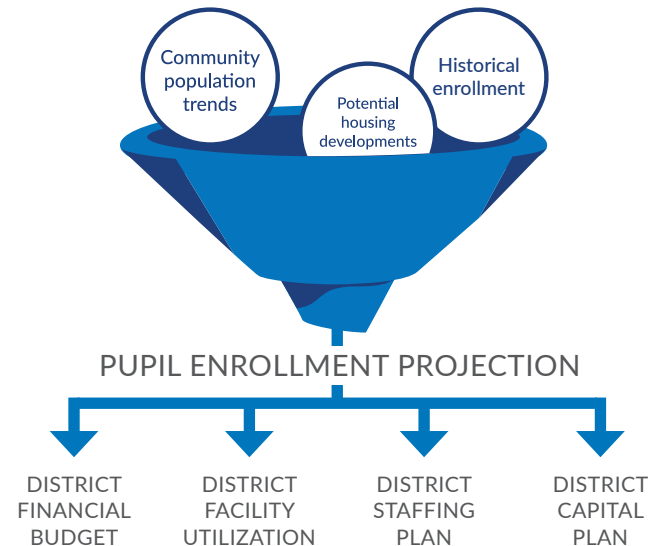
Our proprietary PEP reports are 99% accurate and have guided decisions that have saved districts millions in unneeded operational or capital expenditures.



Dozens of school districts have made major decisions based on the data in our PEP reports.

## Tailored reports fit your district's planning needs

- ✓ District-wide programming
- ✓ Special education
- ✓ Adult education
- ✓ Alternative education
- ✓ Detailed views by grade level, building, or classroom



## Contact us

**Paul R. Wills, AIA, LEED AP**

Paul.Wills@plantemoran.com  
248-223-3316



**Keith McDonald**

Keith.McDonald@plantemoran.com  
947-215-6578

